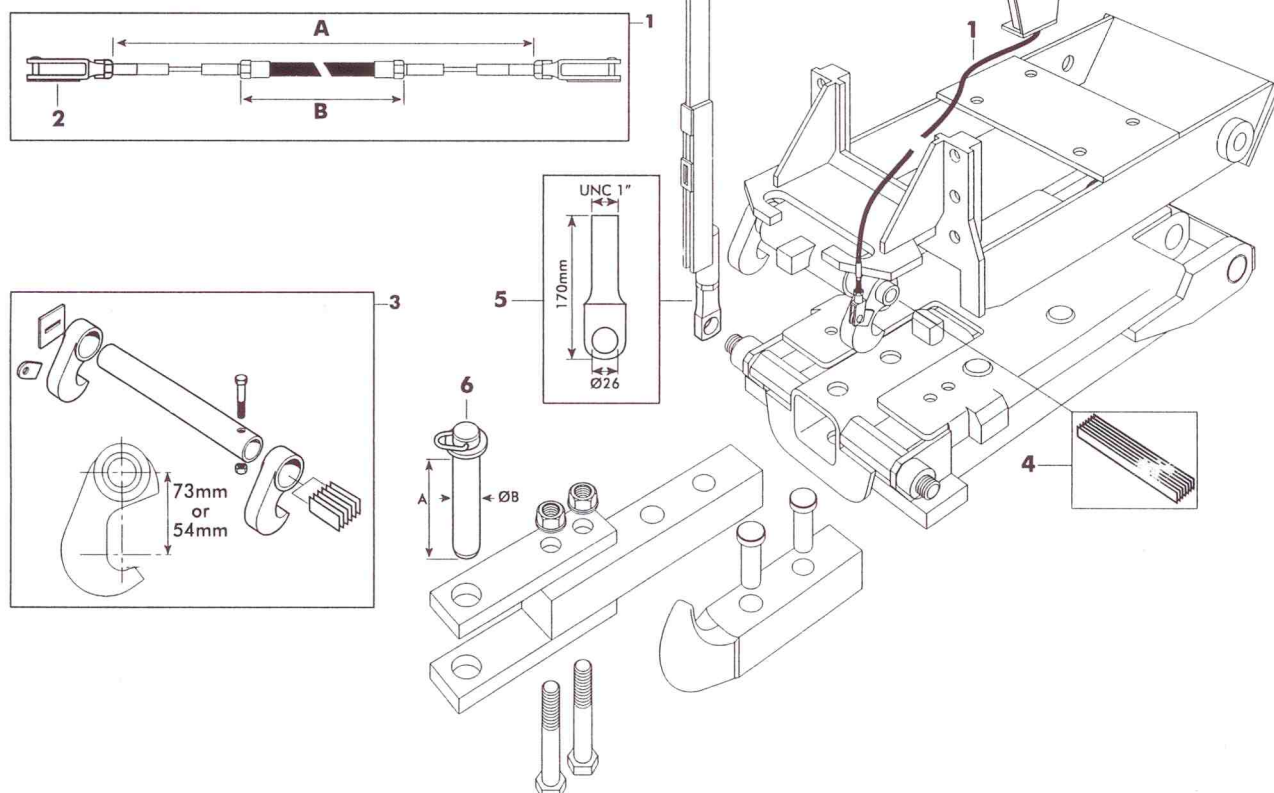




## Axla Pick Up Hitch Components



SPAREX No.	DESCRIPTION	AXLA EQUIVALENT	MEASUREMENT / DIMENSION
1	<b>S.52501</b> Control Cable	62001	A = 1075mm, B = 650mm
1	<b>S.52502</b> Control Cable	62002	A = 1395mm, B = 970mm
1	<b>S.52503</b> Control Cable	62003	A = 1645mm, B = 1220mm
1	<b>S.52504</b> Control Cable	62004	A = 2520mm, B = 2100mm
1	<b>S.52505</b> Control Cable	62005	A = 1845mm, B = 1420mm
1	<b>S.52506</b> Control Cable	62006, 30618	A = 1480mm, B = 1220mm
1	<b>S.52507</b> Control Cable	62007	A = 1950mm, B = 1525mm
1	<b>S.52508</b> Control Cable	62008, 30842	A = 1315mm, B = 1055mm
1	<b>S.52509</b> Control Cable	62009, 30843	A = 990mm, B = 730mm
1	<b>S.52510</b> Control Cable	62010, 30852	A = 1245mm, B = 820mm
1	<b>S.52511</b> Control Cable	62013	A = 3052mm, B = 2675mm
1	<b>S.52512</b> Control Cable	62014	A = 2360mm, B = 2100mm
2	<b>S.52513</b> Outer Fork	61070	
3	<b>S.52516</b> Hook Repair Kit (Suitable for 73mm hook)	44082, 46300	Kits include : Hook x 2, Spring x 6, Spring Holder, Cable Holder and Bolt & Nut Assembly
3	<b>S.52519</b> Hook Repair Kit (Suitable for 54mm hook)	43044	Kits include : Hook x 2, Spring x 6, Spring Holder, Cable Holder and Bolt & Nut Assembly
4	<b>S.52517</b> Spring Repair Kit		Kits include : Spring x 6, Spring holder and Bolt & Nut Assembly
5	<b>S.52514</b> Lifting Link Bolt	40364	Length = 170mm, Centre = 26mm, Threads = 1"UNC
6	<b>S.49415</b> Hitch Pin	42363	A = 183mm, B = 32mm